



We Make It Work Better.



LIFE SCIENCES SKIDS AND CAPABILITIES

Providing hygienic processing equipment and customized services

Since 1885

www.mgnewell.com

www.newellautomation.com



We Make It Work Better.

M.G. Newell is a full-service provider of hygienic solutions for the bio-tech, pharmaceutical and other sanitary processing industries. We partner with customers to design and fabricate cost-effective, customized systems to fit their requirements. Our goal is to provide a solid experience; streamlining your project utilizing our engineering, design, fabrication, automation and installation capabilities.

Our customers represent the world's largest manufacturers of parenteral and solid dose pharmaceuticals, personal care products, OTC medicines, testing kits, and more. To help them meet consumer expectations, we strive to support their goals of hygienic processing from start to finish.

Functional safety and reliability are not theoretical product advantages – we know they are essential properties in life sciences applications. Therefore, our engineers build sanitary design into every system, from pump carts to WFI loops to valve clusters to process filtration systems to new greenfield installations.

Our Newell Automation controls team will identify the appropriate instrument and control functionality for your process. With automation hardware, software controls, control panel design and fabrication, we provide turnkey solutions for CIP, batching, blending and other processes.

Greensboro Division/Corporate

336-393-0100

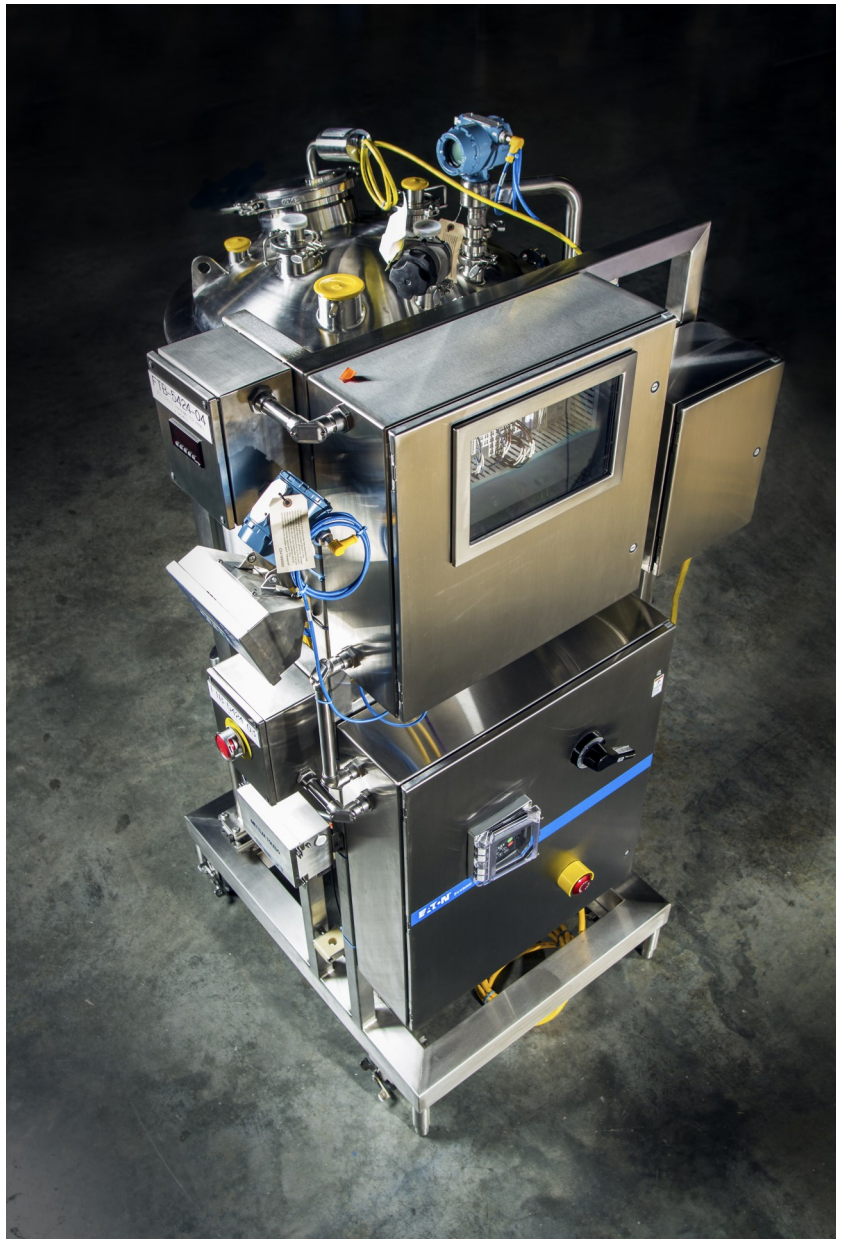
Louisville Division

502-459-7475

Nashville Division

615-822-3030

sales@mgnewell.com





Skidded systems offer faster time to market, higher quality fabrication and provide flexible, efficient use of space.

Optional designs are available to meet NEMA-4 and/or explosion-proof environments.

Our systems meet and often exceed compliance to FDA and ASME BPE standards.



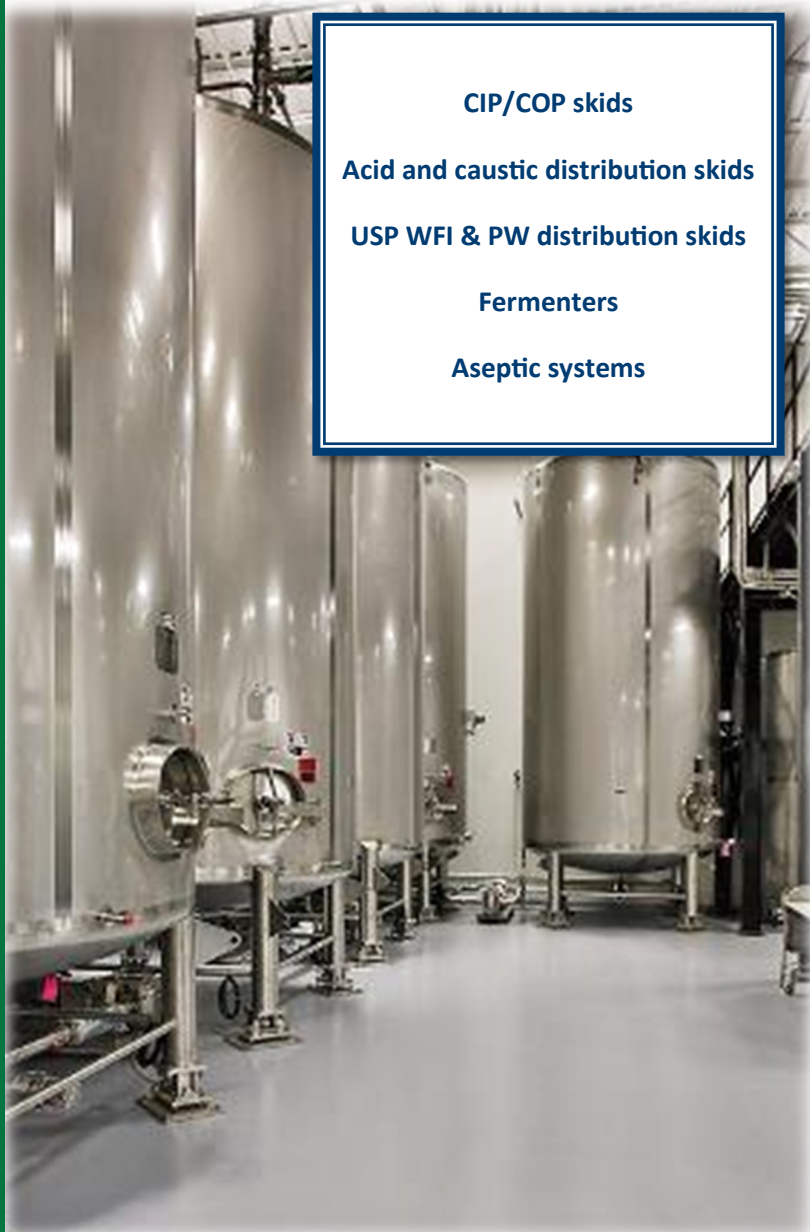
Process filtration skids

Ingredient distribution skids

Viral inactivation skids

Media and buffer systems





CIP/COP skids

Acid and caustic distribution skids

USP WFI & PW distribution skids

Fermenters

Aseptic systems



Single-wall or jacketed tank designs

Fully customizable layouts

Various agitation options available

Electropolishing and passivation available

Single or multi-tank systems

Tanks and vessels are configured to meet ASME BPE design and construction.





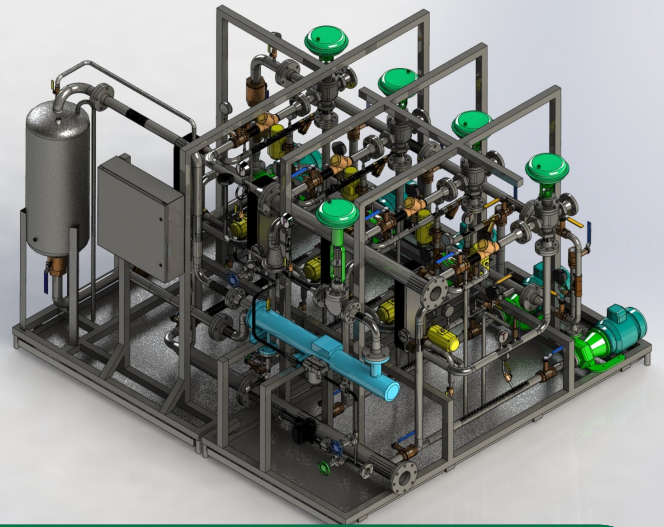
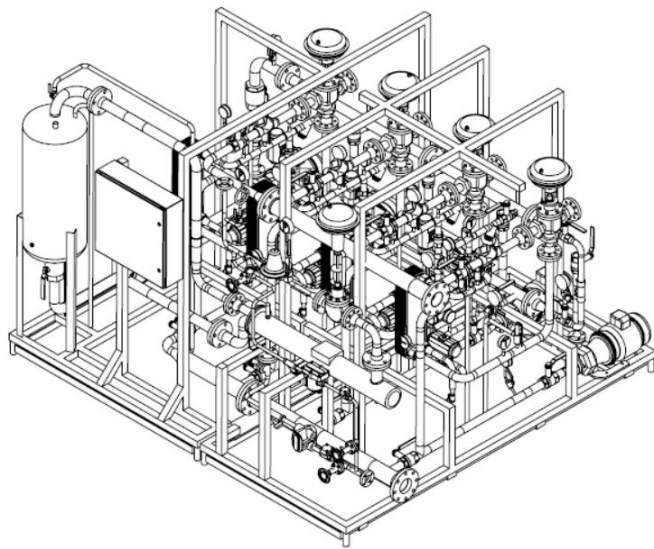
Fabrication of clean room quality stainless steel platforms, floor grating, stairs and handrails.



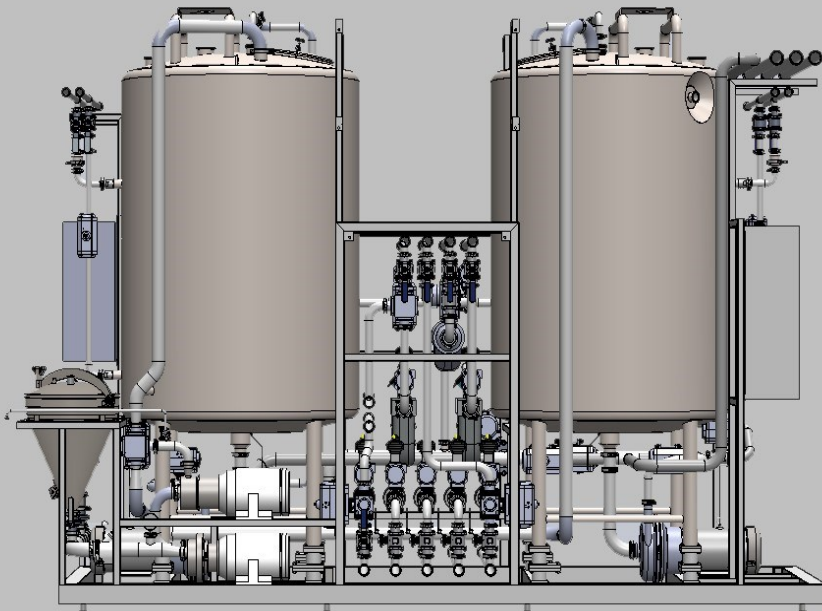
Non-slip flooring and grates

Stair treads and covers

Ladder rungs and covers



Our engineers incorporate user-friendly design into every system—all while meeting your budget.



General Arrangement Drawings
Piping & Instrumentation Diagrams
3D Solid Works Modeling/Drawings
Construction Drawings
As-Built Drawings





Clean steam

Skidded utility sets

Temperature control modules

Utility filtration skids

Stainless steel In-line water heaters

Precise temperature control

Energy efficient

Batch and continuous processing

Process monitoring and control





Single-use systems and controls

Ergonomically designed for loading and unloading bag and tube sets

Single-use automation and sequence programming



Valve clusters

Liquid degassing and gassing systems

CO₂ and O₂ measurement





Greenfield and upgrade
installations

Custom engineered designs

Isometric piping diagrams

Our experienced installation teams communicate and work effectively with your plant personnel.



Material Test Reports

Electropolish certificates

Weld log/data Sheets

Weld mapping

Digital weld video reports

Piping and Instrumentation Drawings





PLC design and programming
HMI design and programming
Control panel design and
fabrication
Audits and retrofits

Delta V control panels

UL-508A Certified Panel Shop

Panels meet NFPA, NEC and UL-508 regulations

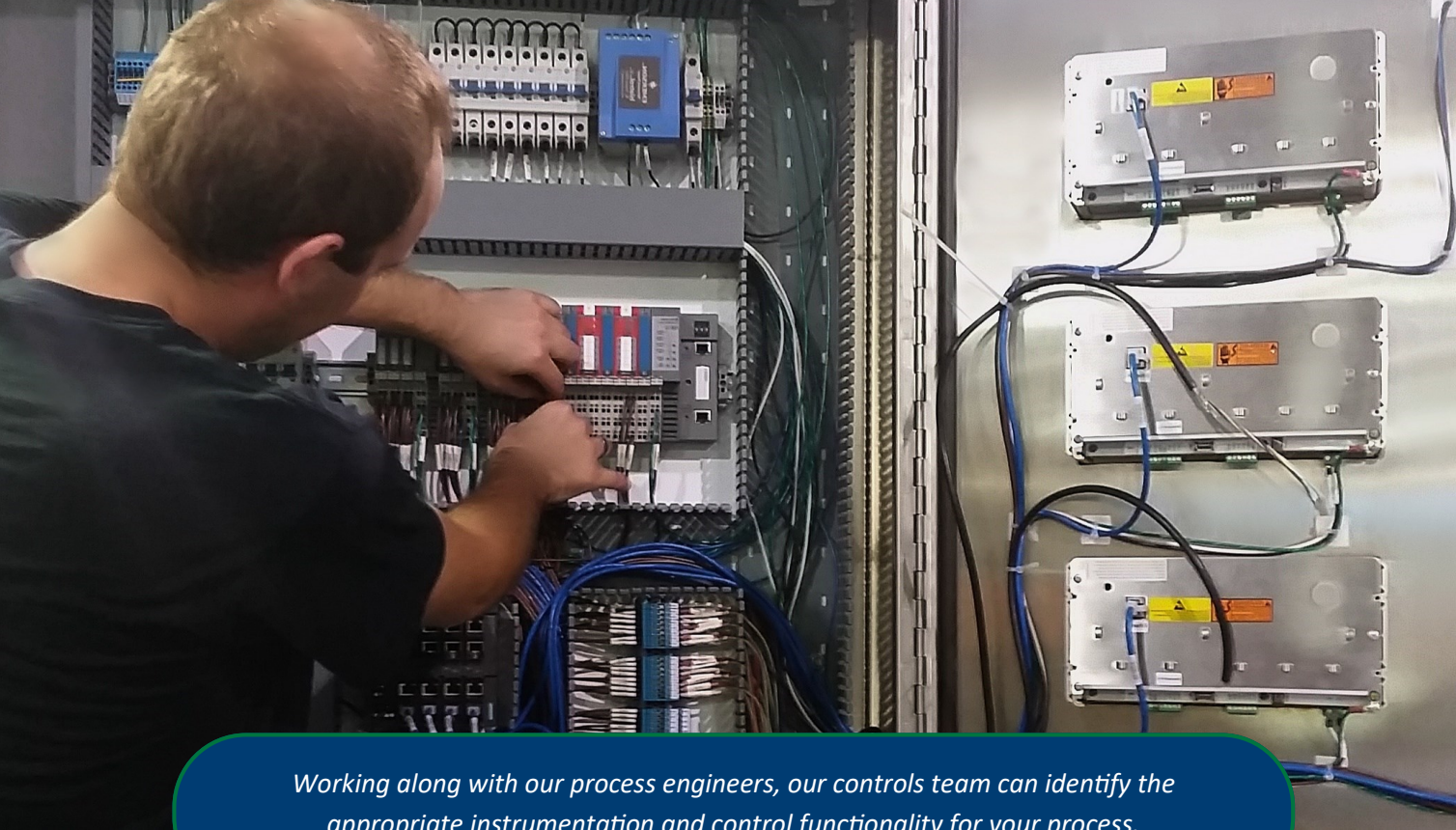
NEMA 4x and explosion proof panels optional

Factory and Site Acceptance testing

SCADA systems

Rockwell Automation Recognized System
Integrator





Working along with our process engineers, our controls team can identify the appropriate instrumentation and control functionality for your process.

Hardware and software specification

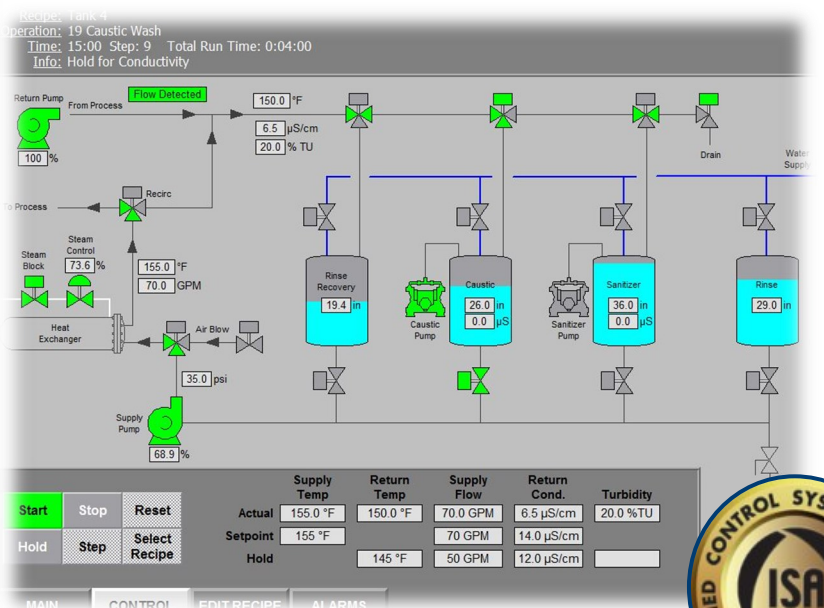
Program development

Support and training

Instrument wiring schematic

Network architecture diagrams

Control loop diagrams



Ignition!

Registered
Integrator



We Make It Work Better.



Providing sanitary processing equipment and customized services since 1885

Greensboro Division
Corporate Headquarters
301 Citation Court
Greensboro, NC 27409
Phone: 336-393-0100
Fax: 336-393-0140

Louisville Division
4400 Bishop Lane, Suite 112
Louisville, KY 40218
Phone: 502-459-7475
Fax: 502-459-7633

Nashville Division
334 Free Hill Road, Suite B
Hendersonville, TN 37075
Phone: 615-822-3030
Fax: 615-822-3031

Email: sales@mgnewell.com

www.mgnewell.com

www.newellautomation.com